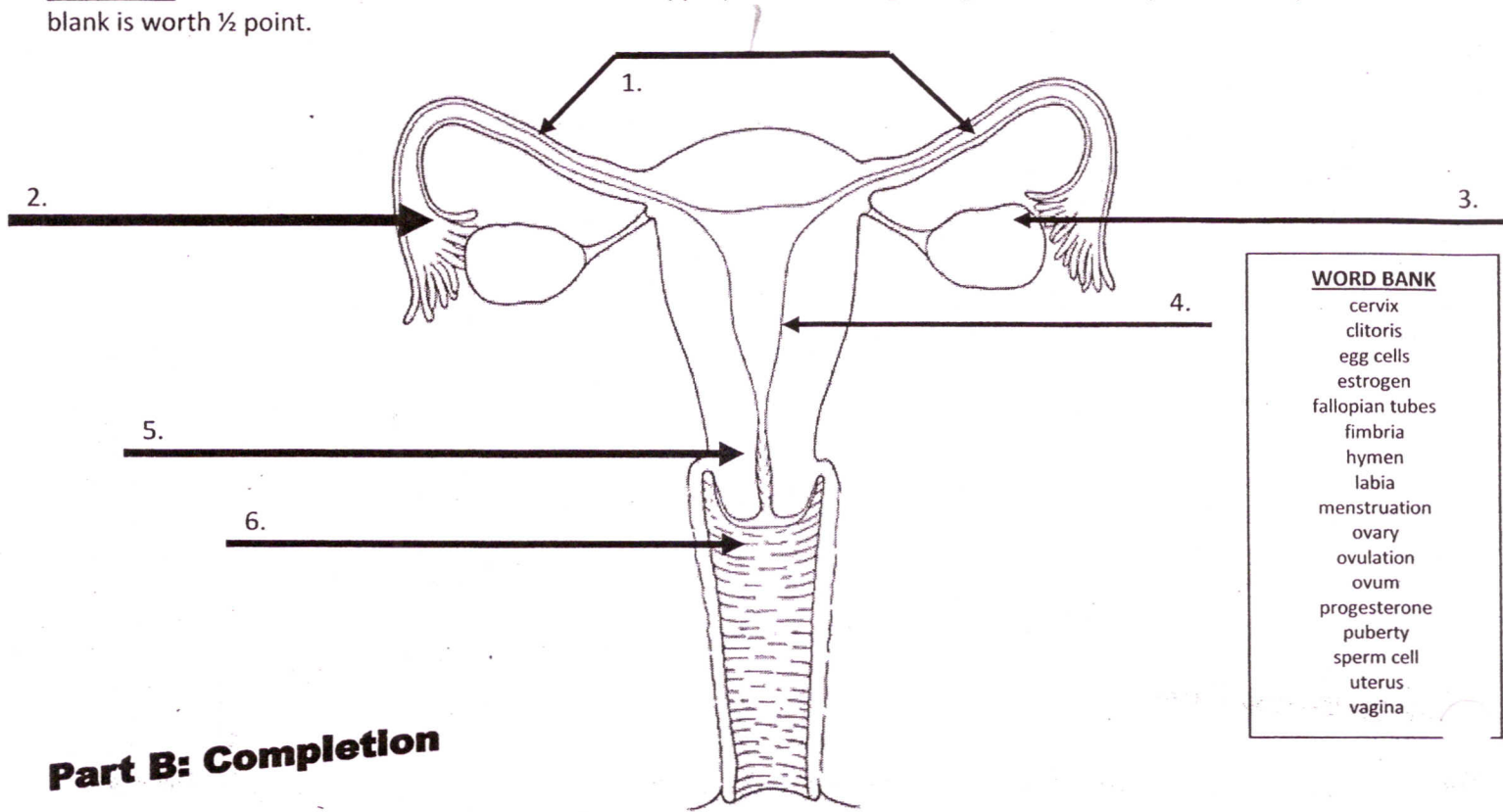


Reproduction Term Review Packet

Part A: Diagram Labeling

Directions: Use the WORD BANK terms to fill-in the appropriate term regarding the Female Reproductive System. Each blank is worth ½ point.



<u>WORD BANK</u>	
cervix	
clitoris	
egg cells	
estrogen	
fallopian tubes	
fimbria	
hymen	
labia	
menstruation	
ovary	
ovulation	
ovum	
progesterone	
puberty	
sperm cell	
uterus	
vagina	

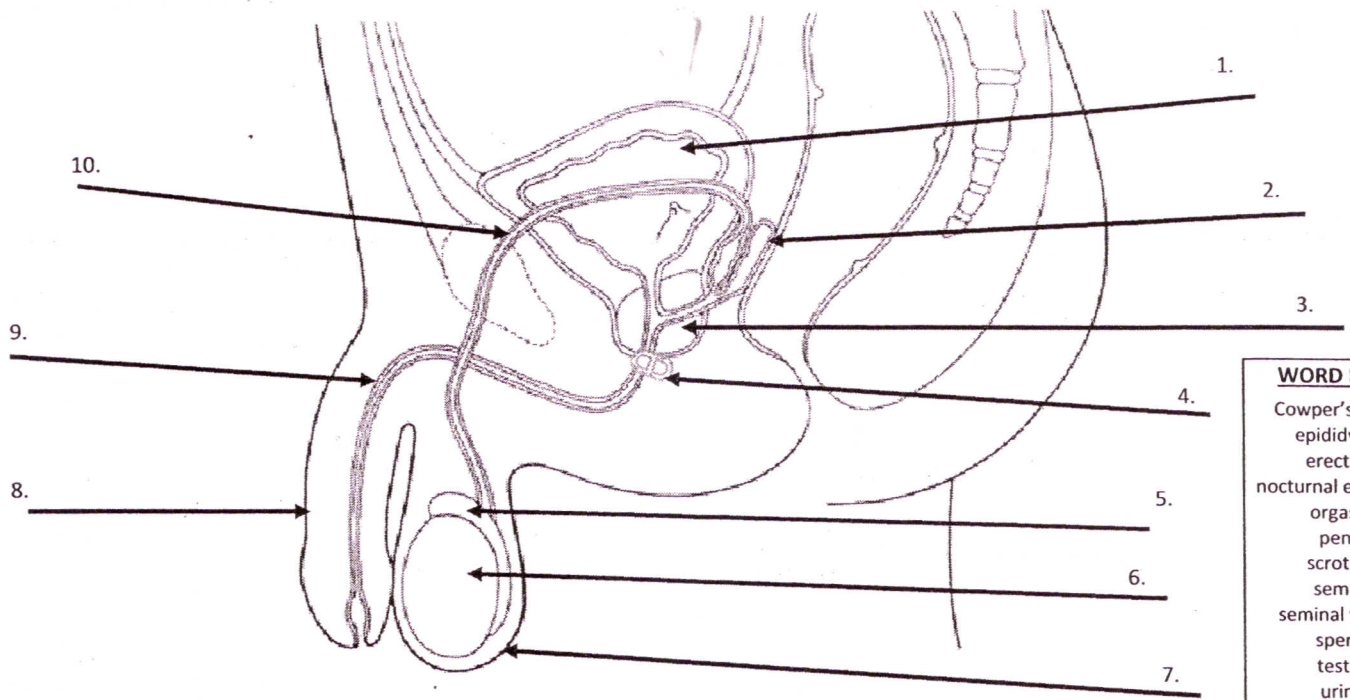
Part B: Completion

First, _____⁷ are produced in two almond-shaped organs known as the _____⁸. During the process of _____⁹ a mature egg (_____)¹⁰ is released and enters one of two _____¹¹. For a few days the egg cell travels toward the pear-shaped _____¹². The lining of this organ thickens in preparation for a fertilized egg. If the egg is not fertilized by the male _____¹³, it will leave the body together with the lining of the uterus and a small amount of blood. This is called _____¹⁴.

The lower portion of the uterus is called the _____¹⁵ and is a common site of cancer in women is attached to the female organ of intercourse, the _____¹⁶. At the opening of the this organ there usually is a circular fold of skin called the _____¹⁷. Outside this organ are one of two-pairs of skin folds covered with pubic hair they are known as _____¹⁸. Between these folds just below the mons veneris is a small, round, sensitive area of skin called the _____¹⁹. The development of the reproductive system is triggered by the hormones _____²⁰ and _____²¹, which may cause many physical changes in a girl. This period of change is called _____²².

Directions: Use the WORD BANK terms to fill-in the appropriate term regarding the Male Reproductive System. Each blank is worth ½ point.

Part A: Diagram Labeling



WORD BANK	
Cowper's Gland	
epididymis	
erection	
nocturnal emissions	
orgasm	
penis	
scrotum	
semen	
seminal vesicle	
sperm	
testes	
urine	
urethra	
vas deferens	

Part B: Completion

First, _____⁽¹¹⁾ are produced in the small seminiferous tubules of the _____⁽¹²⁾. The oval-shaped glands are protected by a sac called the _____⁽¹³⁾. After the sperm cells are produced, they are stored in a large coiled tube on the outer surface of each testicle called the _____⁽¹⁴⁾. From this tube the sperm go into a larger tube called the _____⁽¹⁵⁾. Which eventually carries them to the male reproductive organ, the _____⁽¹⁶⁾. The sperm are nourished by a sugary fluid from the _____⁽¹⁷⁾, a chemical fluid from the _____⁽¹⁷⁾ which is a common site of cancer in men and then fluid from the _____⁽¹⁸⁾ which are two small glands located near the bladder. The fluids plus the sperm cells combine to form _____⁽¹⁹⁾ the fluid ejaculated from the penis during _____⁽²⁰⁾. Before a male can ejaculate the spongy tissue surrounding the penis becomes engorged with blood causing the penis to be come stiff and hard. This is known as an _____⁽²¹⁾. The tube that carries the semen from the body is the _____⁽²²⁾. This tube also carries _____⁽²³⁾ from the bladder. Males can also have uncontrolled ejaculation during sleep, which are _____⁽²⁴⁾.

Pts ____/13